

SPECTEC Computer Co., Ltd. 德杰電腦股份有限公司

Company Profile



General Information

We **SPECTEC** Computer Co., Ltd. Established in **1994**, engaging in SDIO tech has been for 16 years. By now, we have successfully developed lowest power consumption WLAN cards, ZigBee card, Bluetooth card, NFC, LTE, UWB, GPS receiver, and Video-out cards, camera.....etc.

Spectec is well established and reliable. We have full confidence that we will meet all your requirements.

COMPANY

TECHNOLOGY

PRODUCTS

General Information

Our strong Marketing, Sales, and R&D team are sensitive to sense what will be in great demand for the future IT market throughout Asia, USA & Europe.

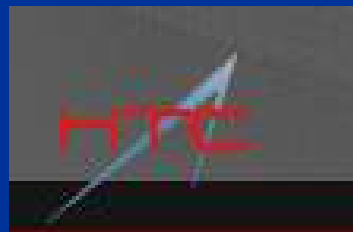
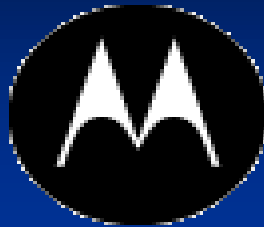
- We are willing to cooperate with you in your business, let's put our hands together and make it happen!

COMPANY

TECHNOLOGY

PRODUCTS

Our Worldwide Customers



COMPANY	TECHNOLOGY	PRODUCTS
---------	------------	----------

Technology Overview

- Business Areas
 - SD Devices
 - WLAN / Bluetooth / GPS Receiver
 - WiMAX / LTE / ZigBee / RFID/ NFC / ANT / UWB
- Solutions
 - Connectivity, Integration
 - OS, AP, Driver, Protocols etc...

COMPANY

TECHNOLOGY

PRODUCTS

Products

COMPANY

TECHNOLOGY

PRODUCTS

SDIO Wireless LAN Series



SDW-820 / SDIO WLAN 802.11b



SDW-821 / SDIO WLAN 802.11b / g



SDW-825 / Mini SDIO WLAN 802.11b/g



SDW-823 / micro SDIO WLAN 802.11b/g

COMPANY

TECHNOLOGY

PRODUCTS

SDW-829 cloud flash

- SD WLAN adapter with microSD slot
- 802.11b/g/n Wi-Fi technology
- SD Interface: SD memory Card Physical Layer Version 2.0
- Built-in antenna
- No software installation required
- Card Capacity: 4GB above, up to 32GB



COMPANY

TECHNOLOGY

PRODUCTS

Application for SDW-829



COMPANY TECHNOLOGY PRODUCTS

SDIO Video Out Card



SDV-841
Mini SDIO Video out card



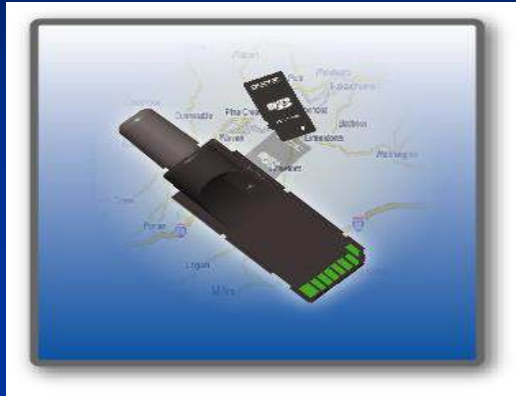
SDV-842
Micro SDIO Video Out card

COMPANY

TECHNOLOGY

PRODUCTS

GPS Receiver



SDG-810
SDIO GPS Receiver



SDG-812
SD Bluetooth GPS Receiver

COMPANY

TECHNOLOGY

PRODUCTS

SDB-832

- Bluetooth V2.0 + EDR Compliant
- Mini SD Spec. 1.1 compliant
- CSR CB-4 Chipset.
- CE, FCC, BQB, TELEC certified
- OS support: Win CE 4.2 / 5.0, Mobile 5.0.
- Customized for Motorola / Symbol MC1000
- Customized for Willcom's WZERO3(es) / Sharp's PDA
- Customized for Intermec CN3 in China



COMPANY

TECHNOLOGY

PRODUCTS

SDA-323



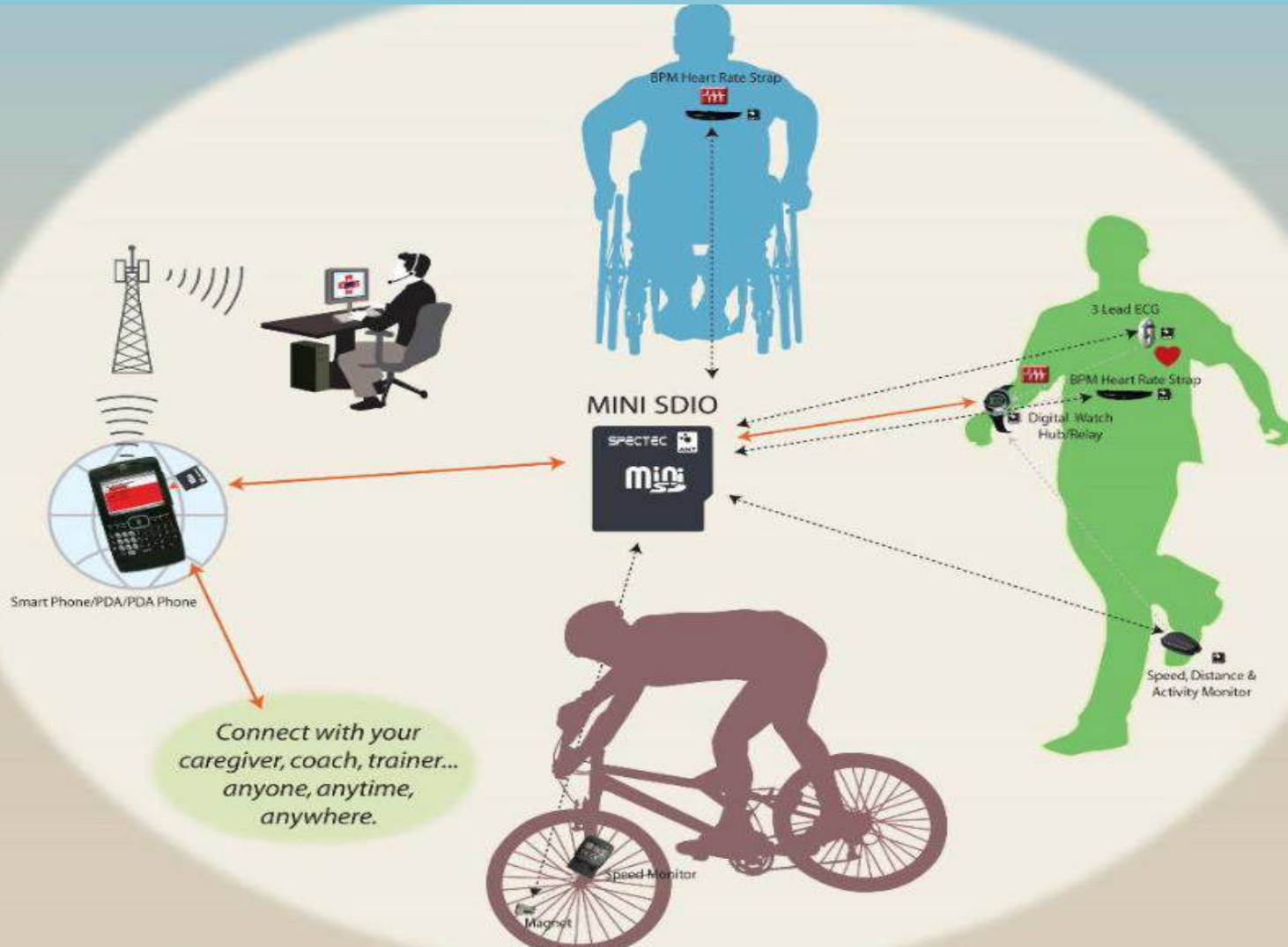
- An ANT based microSD Card
- Health Monitoring on the go
- Use your smart phone for real time wireless data collection, analysis and transfer
- Spectec provide the mini SD RF card solution that links the ANT+Sport body sensors to smart phone.
- Interface : SD / SDIO, SPI, SD1 or SD4
- Built in NAND flash

COMPANY

TECHNOLOGY

PRODUCTS

Health Monitoring... *On the Go!*



SDZ-539



- ZigBee 2007, Base on IEEE 802.15.4
- Interface : SD / SDIO, SPI, SD1 or SD4
- Support OS: Wins CE for Mobile phone & Smart phone, Wins. XP, Vista, Android, Symbian
- Built in 2GB NAND flash
- Customized for Telecom Italia
- Frequency Band:2.405Mhz ~ 2.480Mhz(16 Channel)
- The first one in the market.

COMPANY

TECHNOLOGY

PRODUCTS

SDZ-536



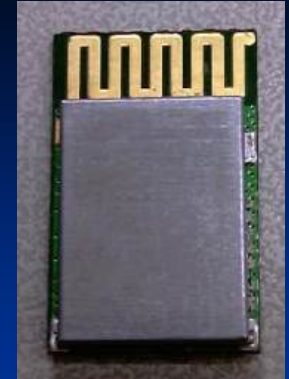
- ZigBee 2007, Base on IEEE 802.15.4
- Interface : USB interface
- Support OS: Window XP, Vista
- Frequency Band:2.405Mhz ~ 2.408Mhz(16 Channel)
- Customized for Telecom Italia
- Plug and Play

COMPANY

TECHNOLOGY

PRODUCTS

SDZ-5120 ZigBee Module



- ZigBee 2007, MCU: TI2530
- Base on IEEE 802.15.4
- Data rate:250kbps
- Frequency Band:2.405Mhz ~ 2.408Mhz(16 Channel)
- Internal memory: Flash :256KB RAM:8KB
- **SDZ-5120: ZigBee Module without Power Amplifier**
- Dimension: 12.9 x 17.7 mm

SDZ-5150 ZigBee Module



- ZigBee 2007, MCU: TI2530
- Base on IEEE 802.15.4
- Data rate: 250kbps
- Frequency Band: 2.405Mhz ~ 2.408Mhz(16 Channel)
- Internal memory: Flash :256KB RAM:8KB
- **SDZ-5150: ZigBee Module with Power Amplifier**
- Dimension: 26 x 36 mm

SDJ-7120 ZigBee Module

- ZigBee 2007, MCU: JN-5148
- Base on IEEE 802.15.4
- Data rate: 250kbps
- Frequency Band: 2.405Mhz ~ 2.408Mhz (16 Channel)
- Internal memory: Flash : 4Mbit RAM: 128KB
- UART Baud Rate: The baud rate is programmable up to 1Mbps, standard baud rates such as 4800, 9600, 19.2k, 38.4k etc. can be configured.
- Dimension: 26 x 36 mm



COMPANY

TECHNOLOGY

PRODUCTS

SDJ-7150 ZigBee Module



- ZigBee 2007, MCU: JN-5148
- Base on IEEE 802.15.4
- Data rate:250kbps
- Frequency Band:2.405Mhz ~ 2.408Mhz(16 Channel)
- Internal memory: Flash :4Mbit RAM:128KB
- External antenna
- UART Baud Rate: The baud rate is programmable up to 1Mbps, standard baud rates such as 4800, 9600, 19.2k, 38.4k etc. can be configured.
- Dimension: 41 x 18 mm

SDLE-7150 LTE RF MiniPCI-E Module



- MIMO Antenna: 2 Receiver, 1 Transmitter
- Frequency Band: 300MHz-2.8GHz
- Standard Support: LTE, WiFi, WiMAX, Bluetooth, WCDMA, ZigBee , etc
- Channel Bandwidth: 0.5~40 MHz
- Low Power consumption: Well under 1W
- FDD and TDD support
- TVWS compliant
- Dimension: 26.8 x 30 x 3.95 mm

SDN-723 microSD NFC card

- Micro SD NFC card for mobile payment
- Interface : SD / SDIO, SPI mode, SD1 or SD4
- ISO 7816 standard
- Frequency : 13.56MHz
- Customized products

COMPANY

TECHNOLOGY

PRODUCTS

ZigBee SIM solution

- The ZigBee SIM card (ZSIM) is a combination of a standard SIM card plus a ZigBee transceiver and antenna integrated in one ISO7816 plug-in form factor.
- The ZSIM is able to provide both security and proximity functionalities to deliver new mobile operator centric services in the ZigBee environments.
- **Customized products**

COMPANY

TECHNOLOGY

PRODUCTS

Customized Products

- microSD Security Card
- microSD Smart Card
- USB Security Dongle
- Security Wireless Gateway
- Electrode Measurement
- Ultra Wide Band Dongle for military
- Digital boards
- Roger Boards

COMPANY

TECHNOLOGY

PRODUCTS

Contact Us

Spectec Computer Co., Ltd.

2F, No. 6, Aly. 6, Ln.141, Fuxing N.RD, Taipei, Taiwan, 10547

Tel: +886 2 2545 1288

Fax: +886 2 2545 1866

URL: <http://www.spectec.com.tw>

Key Contact:

General Manager:

Mr. Joung, S. T.

E-mail: spectec@spectec.com.tw

Sales:

E-mail: teresa@spectec.com.tw

Technical:

E-mail: support@spectec.com.tw

COMPANY

TECHNOLOGY

PRODUCTS

The End
THANK YOU!

COMPANY

TECHNOLOGY

PRODUCTS